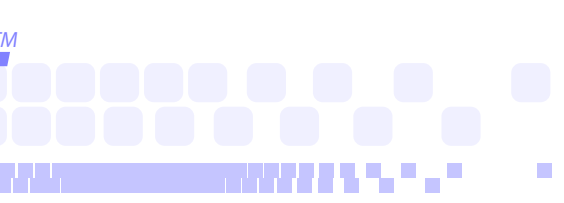




PixagentTM
Engineered Workflow



WT-2/WT-2A Setup Guide



Infrastructure Setup for Windows XP Service Pack 2 or Later

Written by Thomas Sapiano

First Edition

www.pixagent.com



Nikon WT-2/2A Transmitter Setup Guide for Windows XP SP2

This document provides step-by-step instructions on how to configure your Nikon WT-2/WT-2A wireless transmitter and computer to communicate with one another. Each step is provided with a screenshot to make the setup process as easy as possible.

System Requirements

Operating System:

Windows XP
Service Pack 2 or later

Software:

Pixagent ITP 2.0
.NET Framework 1.1

Hardware:

IEEE802.11b or IEEE802.11g Card
Wireless Access Point/Router
Nikon D2Hs/D2X
Nikon WT-2/WT-2A

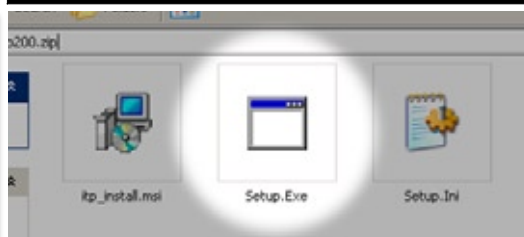
Internet Links

<http://www.pixagent.com/itp20/>

<http://www.pixagent.com/support/>

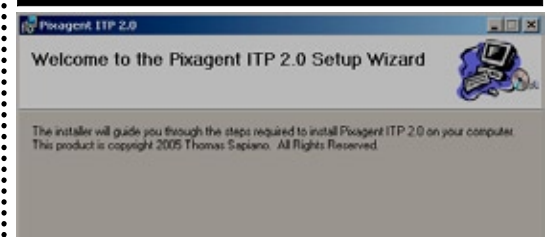
support@pixagent.com

Step 1



After downloading ITP 2.0 from the Pixagent website, open the compressed file and run 'Setup.Exe' to begin the install process.

Step 2



Follow the directions in the installation wizard to place the ITP 2.0 files on your computer.

Step 3

ITP 2.0 Installer - Anonymous Logins

This server can be configured to accept anonymous logins in addition to conventional users. While this makes setup of some devices easier, it is also a potential security risk as anyone can log into the server. By default anonymous logins will be blocked, however if desired you may enable them at this stage.

☐ Allow Anonymous Logins

Skip

Continue...

This setting may be changed at a later date by right clicking on the ITP tray icon and selecting 'Configuration...'

When prompted whether to allow anonymous logins, leave the checkbox empty and click the 'Continue...' button to move on.

Step 4

ITP 2.0 Installer - Create First User

In order for devices to connect to this server, you must first create a user account. To simplify this process, please enter a username and password in order to create your first user.

Username: tom

Password: xxxx

Skip

Create User

This will create a user with default settings. To modify more advanced settings or to create additional users, go to the 'Edit Users...' option inside of ITP.

When the 'Create First User' window pops up, enter a new username and password pair and click the 'Create User' button.

Step 5

ITP 2.0 Installer - Select Storage Location

Please select the location where you would like images received by the server to be stored on your computer. Any files that come in via FTP or the synchronization feature will be placed in this directory (or a subdirectory specified in a user account).

My Pictures

Browse

Skip

Continue...

This step configures the root folder setting in ITP server. If you would like to modify this in the future, select 'Configuration' in the ITP tray menu.

Select the location where you would like ITP to place the received image files on your computer. Click the 'Continue' button when you are done.

Step 6

ITP 2.0 Installer - Select Wireless Adapter

Please select the wireless network card that will be used by this system to communicate with the transmitters. After being selected, ITP will perform some initial setup tasks that will simplify further configuration steps.

Select Wireless Adapter:

3Com EtherLink Server 10/100 PCI (3C980C-TX-M) - Packet S

Skip

Continue...

This step will create a virtual IP Address on this adapter. This allows you to use a single configuration for your transmitter regardless of what network your computer is connected to.

Select the network adapter that the wireless transmitter will use to communicate with your computer and click 'Continue'.

Wireless Setup Guide

Windows XP Service Pack 2 or Later

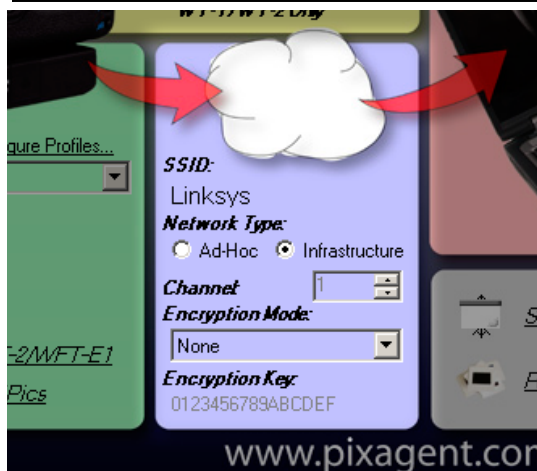


Step 7



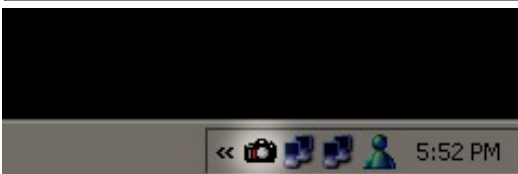
If the Windows Firewall is enabled on your computer, you will be prompted to continue blocking ITP. When this dialog pops up, select the *Unblock* button to allow ITP to receive connections from the camera. This is necessary for proper operation of your system.

Step 9



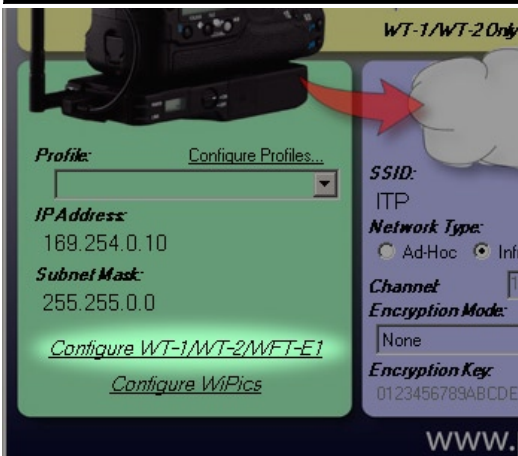
Once the *Control Centre* interface comes up, enter the wireless settings that you are currently using in the blue section. Please refer to the settings used in your access point/router for the correct values.

Step 8



Now that the installation process is complete, ITP is now set up and operational on your computer. Your next task is to configure the camera so that it knows how to communicate with your computer. To begin this process, double click on the ITP tray icon (shown above) in order to launch the *Control Centre* interface.

Step 10



Once the specified settings have been selected, click the *Configure WT-1/WT-2/WFT-E1* link to begin the process of configuring your camera. Follow the provided directions to load these settings onto a memory card.

Firewalls

Firewalls are designed to protect computers from outside threats. One of the mechanisms used to do this is to block any connection that does not originate from the computer/network. For normal users this typically isn't a problem as the tasks they perform are initiated by the user.

These image transmitters work in a different manner, however. When an image is ready to be transmitted, the camera is the one that initiates the connection. As such, in their default configuration, most firewalls will attempt to prevent this action from taking place. When that happens, the camera will be unable to connect to your computer.

If you are using firewall software other than the one supplied with Windows XP you may need to perform additional steps. In order for the camera to function correctly, the firewall must be configured to allow incoming FTP traffic (TCP/IP port 21). The way that you do this depends on the firewall being used, so please read the instructions that came with it.

Selecting your wireless network adapter.

During the installation process, you are prompted to select the network adapter used for your transmitter. Whenever ITP is started, it will automatically take steps to configure this adapter to operate with your transmitter. As such, if you switch to using another adapter you should change your selection in the 'Configure Adapter' entry in the ITP tray menu to ensure that these features continue to operate.



Wireless Setup Guide

Windows XP Service Pack 2 or Later

Preferred Networks

Windows XP wireless networking subsystem allows you to maintain a list of preferred networks. This list allows you to control the priority of different access points that you typically connect to. Once a network has been added to this list you can select it and move it up and down with respect to the other networks.

FTP User Accounts

In order to connect to an FTP server, the camera must supply login information to identify itself. The installation process will create the first user for you, however if you would like you can create more users by clicking the *Add User* link in the *red* section of the *Control Centre*.

In addition to providing a basic layer of security, user accounts also allow you a greater degree of control. For instance, the files transmitted using each account are saved in different locations. This allows you to easily keep images from different cameras and/or shooters separate from one another.

Step 11



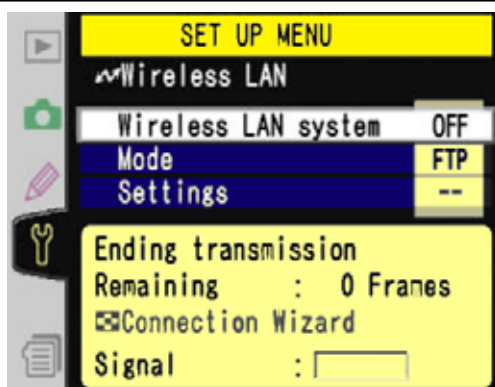
Remove the CF card from your computer and insert it into the camera with the WT-2 attached. Wait for the green light to go out, then press the *Menu* button. Navigate to the *Set Up* tab (the bottom tab) and continue on to the next step...

Step 12



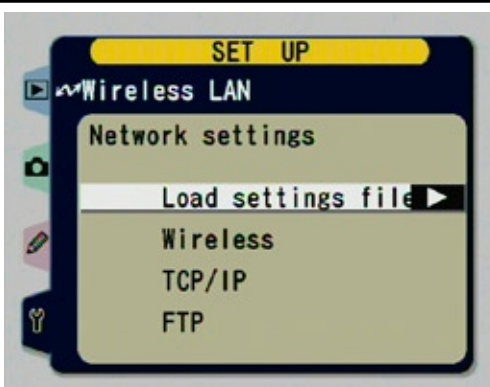
Select the *Wireless LAN* entry and press the controller pad right to configure the WT-2 transmitter.

Step 13



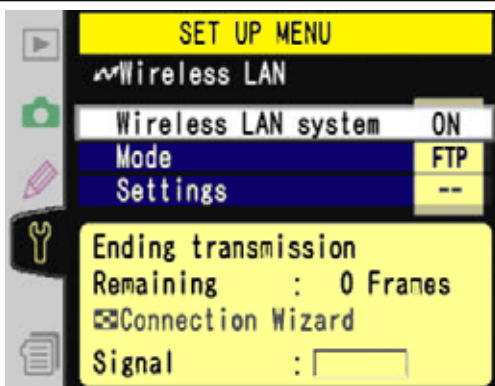
Once the *Wireless LAN* menu appears select the *Wireless LAN system* entry and switch it to the *OFF* position.

Step 14



Select the *Load settings file* entry and instruct the camera to retrieve the settings from the card.

Step 15



When the settings have been loaded, return to the *Wireless LAN* menu. Return to the *Wireless LAN system* entry and switch it back to *ON*.

Step 16



Complete

If everything has worked correctly, the transmitter will now be functional. If you haven't done so yet, take a picture to ensure that it is transmitting correctly. If it is *not* working, please see the troubleshooting section.

Wireless Setup Guide

Windows XP Service Pack 2 or Later



Wireless Network Settings

During step nine of the setup process, you were asked to enter the wireless settings into the blue section of the control centre. In order for the WT-2 to function properly, these values must be entered correctly and completely. If you are unsure about any of these values, please read on for a quick summary of the required information and how to obtain it.

SSID (Network Name)

The SSID (Service Set Identifier) is a unique name that identifies a wireless network. All devices operating on your network use this name to find and connect to the correct access point. It is important to note that this value is *case sensitive* so make sure that you enter it *exactly* as written.

If you are unsure of the name of your network, simply right-click on your wireless network adapter's tray icon and select *View Available Wireless Networks*. This will list all of the networks in range, as well as tell you the name of the network that your computer is currently connected to.

Network Type

This field selects the type of WiFi network that you would like to connect to. Infrastructure networks (the type covered in this guide) are wireless networks based around dedicated access points. Ad-Hoc networks are a simpler form of wireless networking where devices can communicate directly with one another.

Channel

Specifies the frequency at which the wireless network will operate. When used with Infrastructure networks, the channel is automatically determined so this field cannot be modified in this mode.

Encryption Mode & Key

Wireless networks can optionally be configured to encrypt data travelling over them to prevent third parties from intercepting private information. In order to use this, all devices on the network must be configured with the same encryption mode and key.

For instructions on configuring your network to operate in this mode, please see the documentation that came with your wireless access point/router.

Encryption

The Nikon WT-2/2A supports both WEP and WPA encryption. When enabled in both the camera and the laptop, all transmitted images will be encrypted to prevent anyone from intercepting them.

For simplicity sake, this guide leaves this feature disabled. For most people this encryption is not necessary - however if you are concerned about this you can turn it on.



Troubleshooting Guide

The WT-2 is a complex device and problems may arise when trying to set it up the first time. This section is designed to guide you through the process of identifying those problems and rectifying them.

Troubleshooting

If the profile was not properly loaded onto the card the 'Load settings file?' entry will be greyed out as shown in the following screen capture:



If this happens, please replace the Compactflash card back into the computer. Return to the *Control Centre* and press the *Configure WT-1/WT-2/WFT-E1* link to reload the profile on the card.

Repeat steps 10 through 15, taking special care to ensure that the drive letter specified in step 10 is correct. It is advised that you verify your selection in Windows Explorer before going on.

If everything was done correctly this time, the entry should be available and you will be able to continue on.


Step 1: Ensure settings have been loaded properly.

Sometimes the WT-2 will not properly load all of the settings from the memory card. It can be very sensitive to the manner in which you *leave* the menus after loading the settings file. Please carefully repeat steps 12-15 in the instructions in order to reload the settings.

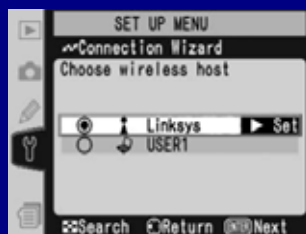
If it is still not connecting properly, please check the settings in the camera and compare them to the ones listed in the instructions contained in this document.

Step 2: Use the Connection Wizard to isolate the problem.

The WT-2 offers a connection wizard to help simplify the setup process. As you enter the settings into this system, it will try them immediately. This allows you to test each value and identify which setting is causing the problem.

To initiate the connection wizard go to the top level of the Wireless LAN menu in the camera, switch OFF the Wireless LAN system and press the  button. Open the ITP Control Centre on your computer and use the values provided there to configure the camera via this interface.

Step 2A: Select the wireless network.



Once the connection wizard is started, it will first show you a list of available wireless networks. Select the appropriate network and then press the Enter button to move on to the next step. If the selected network uses encryption, you may be prompted for additional information.

Wireless Setup Guide

Windows XP Service Pack 2 or Later



Step 2B: Enter network settings.



After the camera has connected to the appropriate wireless network, the next step is to specify the TCP/IP properties. If the fields aren't already set, use the values specified in the green section of the Control Centre.

Press the Enter button on the camera to commit the settings. If you receive a TCP/IP Error message from the camera, go back and verify that the values have been entered correctly.

Step 2C: Specify the server address (your computer).



The next step in the wizard prompts you to specify the server that you would like the images transmitted to. The IP Address value in the red section of the Control Centre should be entered at this stage. Press the enter button to commit the selection and move on.

If the camera generates an *Unable to Locate Server* error, then verify that you have entered the value correctly. If that fails, go to the end of the address and press the trashcan button several times to clear out any extra whitespace characters (as the WT-2 is sensitive to this).

If the problem persists, verify that the correct adapter is selected in the red section and try the other values available in the IP Address dropdown.

Step 2D: Provide login credentials.



Once the camera has successfully connected to ITP, it needs a username and password for authentication purposes. If you have created a user account, enter the username and password here. If you have enabled anonymous logins, simply check the appropriate box. Press enter to test your settings and move on.

Troubleshooting

If you are having problems, the three LEDs on the back of the WT-2 are the best way to diagnose them. This legend describes the various patterns to help you troubleshoot the source of the problem.



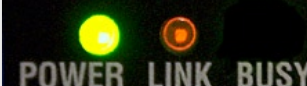
Transmitting

The WT-2 has successfully connected to your computer, and is currently transmitting images.



Connected

The WT-2 has successfully connected to your computer, but is not currently transmitting images.



Trying to Connect

The WT-2 is trying to connect to the FTP server but has not been able to do so.



Connection Failure

The transmitter has run into a problem that is preventing the connection from being formed.



Wireless Setup Guide

Windows XP Service Pack 2 or Later

Connection Status

Connected

When the laptop has associated with a network, this icon will be shown beside its name in the list of networks. This signals that the computer is now ready to communicate with other devices using the same SSID.

Available

The laptop has detected the presence of this network. It has not associated with it, however it is available to connect to.

Unavailable

This icon is displayed beside networks that the laptop cannot find in the vicinity. You may be out of range or the camera may not be turned on.

Step 2E: Specify destination folder.



In this field you will generally want to leave the *Home folder* box checked and press Enter to move on. Use the ITP interface to specify the destination folder.

Step 3: Check software firewalls running on the laptop.

If you are running any software firewalls (other than the Windows firewall) on your laptop, check the settings to ensure that they are not blocking incoming FTP traffic. Each product works in a different way so detailed directions are beyond the scope of this document.

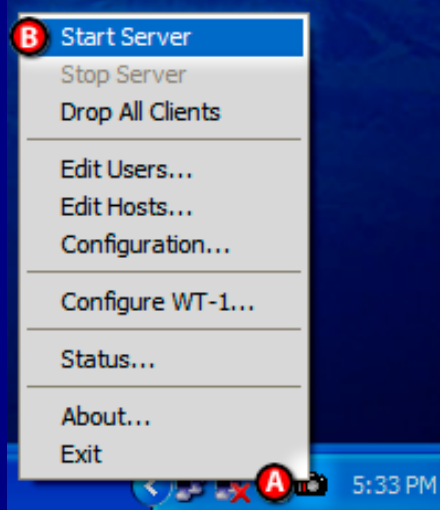
Step 4: Verify you are connected to the network.

Return to the *View Available Wireless Networks* dialog



and make sure that you are connected to the network that you created. If you are not connected, select the network from the list and click the *Connect* button.

Step 5: Verify that ITP is running properly.



Right-click on the ITP icon (A) in the system tray. If the Start Server entry (B) is not greyed out, select it. Try the WT-2 again to see if it is working.

If ITP is already running then try to connect to 127.0.0.1 with FTP client software. If you are unable to connect then double check your settings in ITP and any firewall software you are running.

Wireless Setup Guide

Windows XP Service Pack 2 or Later

Still having problems...

If the above troubleshooters still have not resolved your problems, please feel free to contact us at support@pixagent.com. Some problems need more complex debugging steps that will require personal attention. You can also visit us at:

<http://www.pixagent.com>



ITP Registration

If you have not already done so, please register your copy of ITP 2.0 so that we can notify you of any future updates to the software. Our registration data is not shared with any outside parties and will only be used as you specify on the registration form.

This information helps us keep our customers up to date on any improvements made in our products. If you wish, you may also be placed on the list of potential beta-testers for upcoming versions of our software.

The screenshot shows the Pixagent website in a Mozilla Firefox browser window. The browser's address bar displays <http://www.pixagent.com/>. The website features a navigation menu with links for Products, Services, Support, News, and Company. A large banner for 'ITP 2.0 Pro Now Available' is prominently displayed, accompanied by a Nikon camera image. Below the banner, there are buttons for Features, Screenshots, Manual, and Download. The page is divided into two main sections: 'ITP Features' and 'PocketITP 1.2', each listing various capabilities. A 'More Information' link is provided for both sections. The footer includes a copyright notice for 2004 Thomas Sapiano and a status bar with system icons and an Adblock extension.

Pixagent
Engineered Workflow

Products Services Support News Company

ITP 2.0 Pro Now Available

New! Make the Most of your Wireless Workflow

- Automatic processing of incoming images.
- Live image review and slideshow functions.
- Memory card synchronization system.

Features Screenshots Manual Download

ITP Features

- Assisted Camera Configuration
- Memory Card Synchronization
- Automated Processing Features
- Live Image Review & Analysis
- Live Slideshow System
- Centralized Control Interface
- Adapter Management System
- Batch Renaming & More...

More Information

PocketITP 1.2

- Assisted Camera Configuration
- Battery and Card Space Readouts
- Instant Preview of Images
- Simple, one Handed Operation
- Full Administration from PDA
- Automatic Memory Card Failover
- Power Saving Features
- Compact Footprint

More Information

© Copyright 2004 Thomas Sapiano. All Rights Reserved.

www.pixagent.com

© Copyright 2006 Thomas Sapiano. All rights reserved. This document is protected by Canadian copyright law and may not be reproduced without the explicit consent of its author. IP networking can be a complex topic and no single setup will work in all situations. These directions assume a standard configuration and may not function under all circumstances. As such, this document is provided on an as-is basis without warranty - by using this document the reader accepts all responsibility for their actions. The author does not accept any responsibility for problems that may occur while following these directions.